

AIR DISTRIBUTION DEVICES

COMFORT - EFFICIENCY - QUALITY

Giải pháp phân phối không khí tối ưu
cho mọi công trình

CATALOGUE
2026



ĐA DẠNG CHỦNG LOẠI
Đáp ứng mọi nhu cầu
thiết kế & thi công



CHẤT LƯỢNG CAO
Độ bền vượt trội
hiệu suất ổn định



ĐỂ DÀNG LẮP ĐẶT
Thiết kế tối ưu,
tiết kiệm thời gian

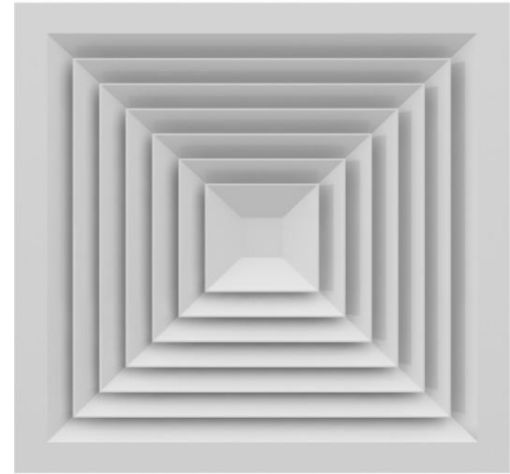
Air distribution devices

Supply Air Diffuser

Structure of square diffuser is designed to suit diversified building and it has elegant outward appearance. It is a widely used product with advantages in terms of pressure drop, noise, air spread and radius of air diffusion

Features.

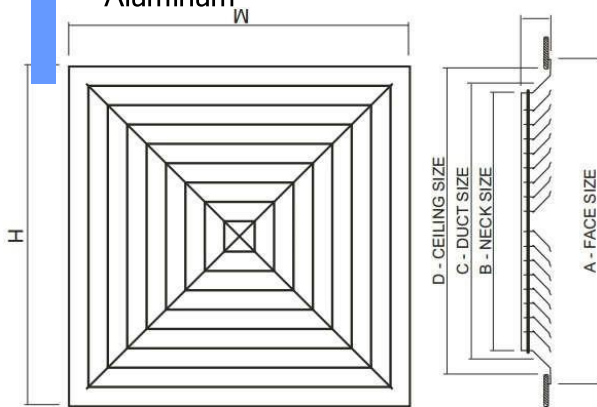
- It is fixed diffusing in 360° direction.
- Internal wings can be separated from the face frame of diffuser and volume can be controlled without separating the internal wings.



SAD

Material: Extruded Aluminum

Dimensions



Face size	Neck size	Duct size	Celling size	Flexible size
WxH	W-150 H-150	W-140 H-140	W-40 H-40	
300x300	150x150	160x160	260x260	D150
450x450	300x300	310x310	360x360	D200
600x600	450x450	460x460	560x560	D300

Area (m ²)	Neck size	Velocity (m/s)	1.5					
			2	2.5	3	3.5	4	
0.09	300x300	m3/s	0.078	0.084	0.107	0.125	0.147	0.170
		m3/h	280	305	385	450	530	615
		Distance	2.47	3.40	4.32	5.00	5.40	5.94
		Noice volumes	<17	<17	<23	<28	<33	<42
0.2025	450x450	m3/s	0.182	0.239	0.292	0.355	0.408	0.458
		m3/h	655	860	1050	1280	1470	1650
		Distance	2.59	3.57	4.54	5.25	5.67	6.24
		Noice volumes	<20	<24	<30	<36	<42	<50
0.36	600x600	m3/s	0.356	0.4	0.447	0.491	0.539	0.586
		m3/h	1280	1440	1610	1770	194	2110
		Noice volumes	<20	<26	<32	<38	<44	<51

Supply Air Diffuser Rotate Style

Application - ứng dụng:

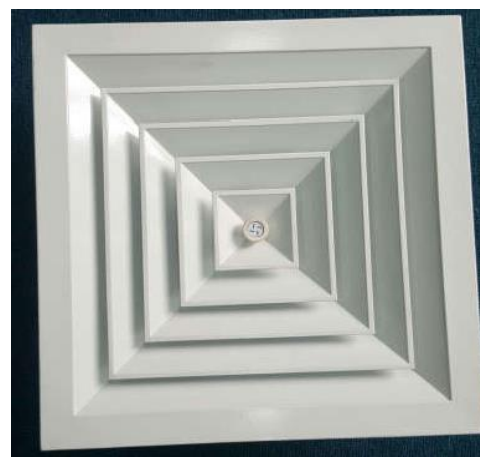
Used as air-supply diffuser, air-return diffuser
 Suitable for insulation for all types of false Ceiling
 Framework and core separately, easy to remove and
 maintenance

Supply Air Diffuser Rotate Style is air grill has knob
 versatile 360-degree, include circular damper,
 increase the performance of construction

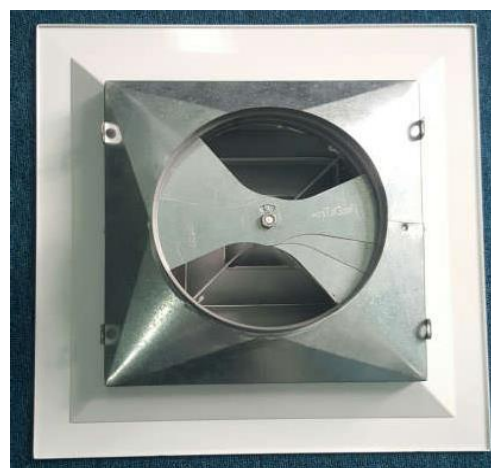
Material - Vật liệu:

Extruded Aluminum

Round volume damper- GI Sheet



SAD

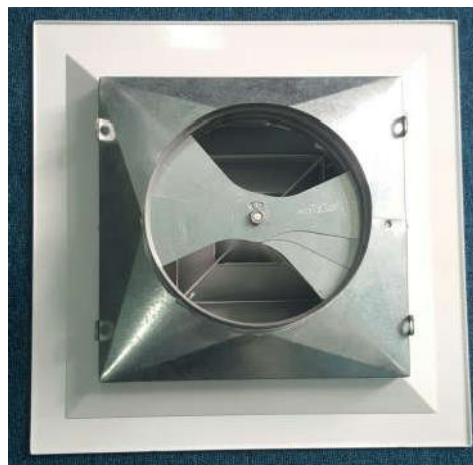


Dimensions -

Face size	Neck size	Round volume damper	Flexible size comfortable	Knob rotate 360 degree
WxH	W-150 H-150	VD size	FD	
300x300	150x150	VD150	FD 150	Yes
450x450	300x300	VD150, VD200	FD 150, FD 200,	Yes
600x600	450x450	VD150, VD200	FD 150, FD 200,	Yes

Air distribution devices

Supply Air Diffuser Rotate Style



Basic Performance data

Area (m ²)	Neck size	Velocity	1.5	2	2.5	3	3.5	4
Diện tích	Kích thước cổ	Lưu lượng kk ra khỏi cửa						
0.09	300x300	m3/s	0.078	0.084	0.107	0.125	0.147	0.170
		m3/h	280	305	385	450	530	615
		Distance	2.47	3.40	4.32	5.00	5.40	5.94
		Noice volumes	<17	<17	<23	<28	<33	<42
0.2025	450x450	m3/s	0.182	0.239	0.292	0.355	0.408	0.458
		m3/h	655	860	1050	1280	1470	1650
		Distance	2.59	3.57	4.54	5.25	5.67	6.24
		Noice volumes	<20	<24	<30	<36	<42	<50
0.36	600x600	m3/s	0.356	0.4	0.447	0.491	0.539	0.586
		m3/h	1280	1440	1610	1770	194	2110
		Distance	2.84	3.91	4.97	5.75	6.21	6.83
		Noice volumes	<20	<26	<32	<38	<44	<51

Slot Linear Diffuser

Application:

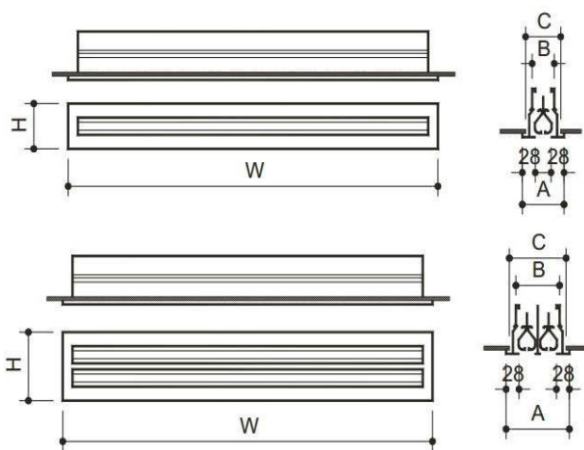
- Functioned as supply air grille and return air grille.
- Air adjustable wings.
- Suitable for meeting halls or showroom which require technical skills and high tech.

Material:



Dimensions - Kích thước

Model (slot)	Width	Face size	Neck size	Celling size
		WxH	W – 38 H – 38	W - 28 H - 28
1	800	800x78	762x40	772x50
2		800x118	762x80	772x90
3		800x158	762x120	772x130
4		800x198	762x160	772x170
1	1000	1000x78	962x40	970x50
2		1000x118	962x80	972x90
3		1000x158	962x120	972x130
4		1000x198	962x160	972x170
1	1200	1200x78	1162x40	1172x50
2		1200x118	1162x80	1172x90
3		1200x158	1162x120	1172x130
4		1200x198	1162x160	1172x170



Basic Performance data

Neck size	Velocity	1	1.5	2	2.5	3	3.5	4
1 slot	m ³ /s	0.025	0.037	0.049	0.061	0.074	0.086	0.098
	m ³ /h	88	133	177	221	265	609	353
	Distances	1.55	2.15	2.90	3.46	4.54	5.47	6.18
	Noice volumes	< 17	< 21	< 21	< 23	< 25	< 25	< 28
2 slot	m ³ /s	0.049	0.074	0.098	0.123	0.147	0.172	0.196
	m ³ /h	177	265	353	442	530	619	707
	Distances	1.63	2.25	3.05	3.64	4.77	5.75	6.48
	Noice volumes	< 17	< 21	< 22	< 25	< 25	< 27	< 30
3 slot	m ³ /s	0.074	0.111	0.147	0.184	0.221	0.249	0.294
	m ³ /h	265	398	530	663	795	898	1060
	Distances	1.77	2.48	3.34	3.99	5.21	6.29	7.09
	Noice volumes	< 20	< 23	< 25	< 28	< 30	< 31	< 35
4 slot	m ³ /s	0.098	0.147	0.196	0.245	0.295	0.244	0.393
	m ³ /h	353	530	707	884	1060	1237	1414
	Distances	1.79	2.46	3.35	3.99	5.25	6.31	7.12
	Noice volumes	< 22	< 22	< 26	< 31	< 35	< 38	< 41

Air distribution devices

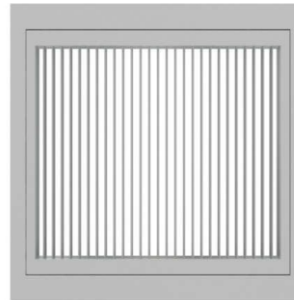
Return Diffuser

Application:

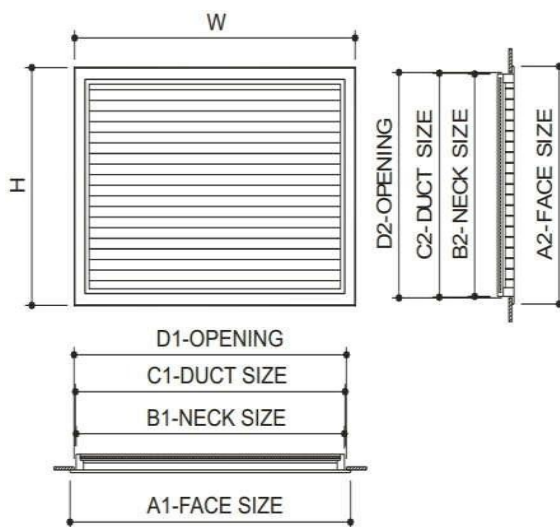
- Functioned as return air grille
- Placed on nock ceiling or attached directly to the ventilation pipe.
- Equipped with filter which can be removed for regular cleaning.
- Alternative bars either straighten or curled upon customer requirements.

Material:

- Extruded Aluminum



FRG



Face size	Neck size	Duct size	Celling size	Flexible size
WxH	W-32 H-32	W-28 H-28	W-20 H-20	
300x300	300x300	272x272	280x280	D150
400x450	450x450	422x422	430x430	D200
600x600	690x600	572x572	580x580	D300

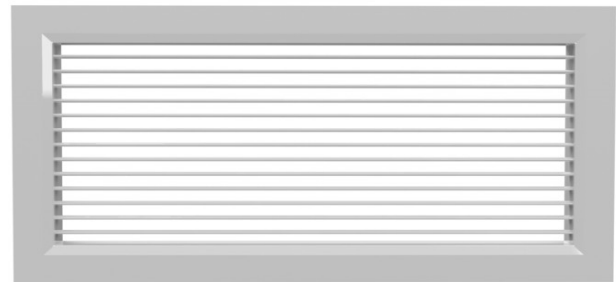
Basic Performance data

Area (m ²)	Neck size	Velocity (m/s)	1.5	2	2.5	3	3.5	4
0.09	300x300	m ³ /s	0.06075	0.081	0.10125	0.1215	0.14175	0.162
		m ³ /h	218.7	291.6	364.5	437.4	510.3	583.2
0.2025	450x450	m ³ /s	0.13669	0.18225	0.22781	0.27338	0.31894	0.3645
		m ³ /h	492.1	565.1	820.1	984.2	1148.2	1312
0.36	600x600	m ³ /s	0.243	0.324	0.405	0.486	0.567	0.684
		m ³ /h	874.8	1166.4	1458	1749.6	2041.2	2332.8

Single Layer Diffuser

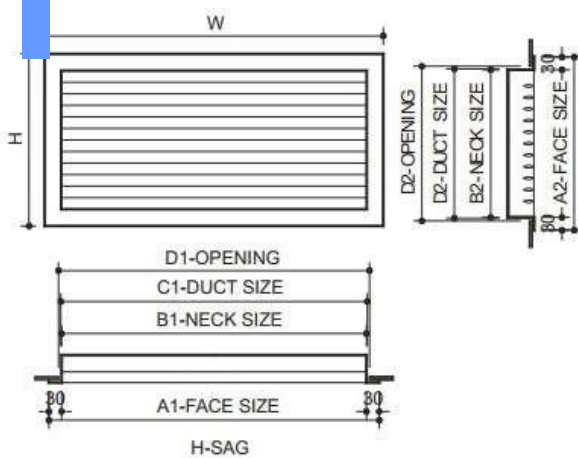
Application:

- Functioned as supply air grille and return air grille.
- Air adjustable wings.
- Suitable for meeting halls or showroom which require technical skills and high tech.



SL

Material:



Dimensions

Face size	Neck size	Duct size	Celling size	Flexible size
WxH	W-50	W-40	W-30	
300x200	250x150	260x160	270x170	D150
400x200	350x150	360x160	370x170	D150
400x300	350x250	360x260	370x170	D250
600x300	550x250	560x260	570x270	D250

Basic Performance data

Neck size	Velocity	1	1.5	2	2.5	3	3.5	4
300x200	m ³ /s	0.029	0.043	0.057	0.071	0.086	0.1	0.114
	m ³ /h	103	154	206	257	308	360	411
	Distance	4.78	7.44	9.96	11.04	13.22	13.95	16.02
	Noice volumes	<15	<17	<17	<19	<22	<23	<26
400x200	m ³ /s	0.04	0.061	0.081	0.101	0.121	0.142	0.162
	m ³ /h	146	218	291	364	437	510	583
	Distance	5.01	7.81	10.45	11.60	13.88	14.65	16.82
	Noice volumes	<19	<20	<23	<24	<27	<30	<31
400x300	m ³ /s	0.069	0.104	0.139	0.173	0.208	0.243	0.277
	m ³ /h	250	375	499	624	749	874	999
	Distance	4.99	7.77	10.41	11.55	13.82	14.59	16.75
	Noice volumes	<22	<26	<29	<31	<35	<38	<41

Air distribution devices

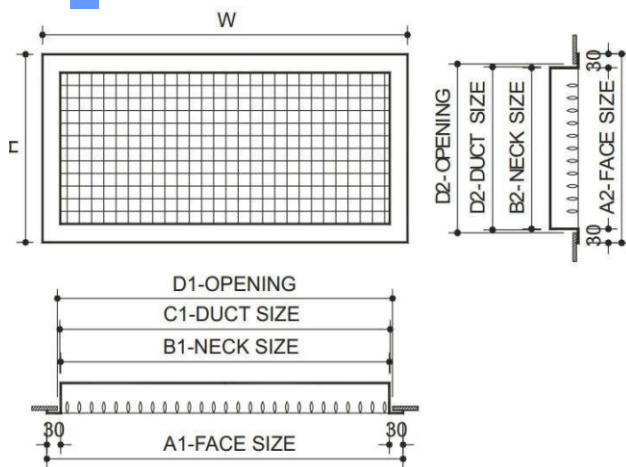
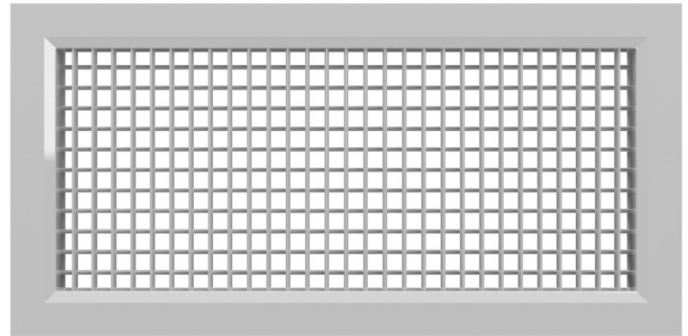
Double Layer Diffuser

Application:

- Functioned as large size air supplying and returning doors.
- Kidney shaped bars can be adjusted upon customer's requests.

Material:

- Extruded Aluminum



Dimensions

DLD

Face size	Neck size	Duct size	Celling size	Flexible size
WxH	W-50	W-40	W-30	
300x200	250x150	260x160	270x170	D150
400x200	350x150	360x160	370x170	D150
400x300	350x250	360x260	370x170	D250
600x300	550x250	560x260	570x270	D250

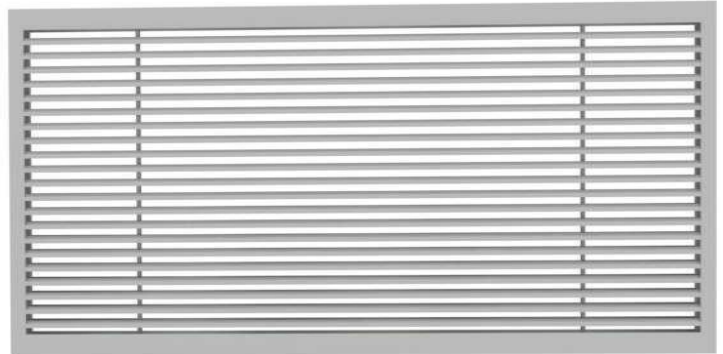
Basic Performance data

Neck size	Velocity	1	1.5	2	2.5	3	3.5	4
300x200	m ³ /s	0.025	0.038	0.050	0.063	0.076	0.188	0.101
	m ³ /h	91	136	181	227	272	318	363
	Distance	4.8	7.4	10.0	11.0	13.2	14.0	16.0
	Noice volumes	<15	<17	<17	<19	<22	<23	<26
400x200	m ³ /s	0.036	0.054	0.071	0.089	0.107	0.125	0.143
	m ³ /h	129	193	257	321	386	450	514
	Distance	5.0	7.8	10.5	11.6	13.9	14.7	16.8
	Noice volumes	<19	<20	<23	<24	<27	<30	<31
400x300	m ³ /s	0.061	0.092	0.122	0.153	0.184	0.214	0.245
	m ³ /h	220	330	441	551	661	771	881
	Distance	5.0	7.8	10.4	11.5	13.8	14.6	16.7
	Noice volumes	<22	<26	<29	<31	<35	<38	<41

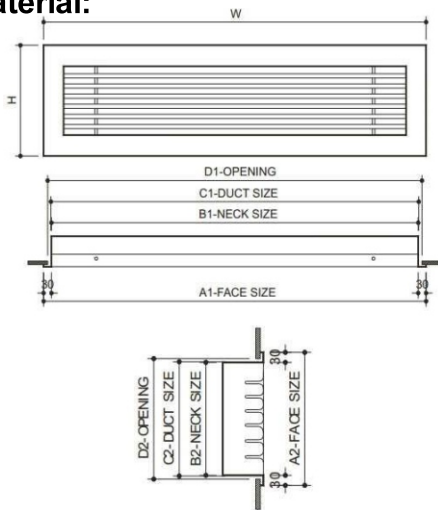
Linear Diffuser

Application:

- Functioned as air supplying and returning doors, linear air supplying grille.
- Placed on mock ceiling or directly attached to ventilation pipe.



Material:



LB

Dimensions

Face size	Neck size	Duct size	Celling size	Flexible size
WxH	W - 50	W-40	W-30	
300x200	250x150	260x160	270x170	D150
400x200	350x150	360x160	370x170	D150
400x300	350x250	360x260	370x170	D250
600x300	550x250	560x260	570x270	D250

Basic Performance data

Neck size	Velocity	1	1.5	2	2.5	3	3.5	4
300x200	m ³ /s	0.024	0.037	0.049	0.061	0.073	0.085	0.098
	m ³ /h	88	132	176	219	263	307	351
	Distance	3.41	5.31	7.11	7.89	9.44	9.97	11.44
	Noice volumes	<15	<17	<17	<19	<22	<23	<26
400x200	m ³ /s	0.034	0.051	0.068	0.085	0.102	0.119	0.137
	m ³ /h	123	184	246	307	369	430	491
	Distance	3.13	4.87	6.52	7.23	8.66	9.14	10.49
	Noice volumes	<17	<19	<21	<21	<25	<30	<32
400x300	m ³ /s	0.057	0.085	0.114	0.142	0.171	0.199	0.228
	m ³ /h	205	307	410	512	614	717	819
	Distance	3.58	5.58	7.47	8.28	9.92	10.47	12.02
	Noice volumes	<19	<21	<22	<25	<29	<31	<34

Air distribution devices

Weather Proof Diffuser

Application:

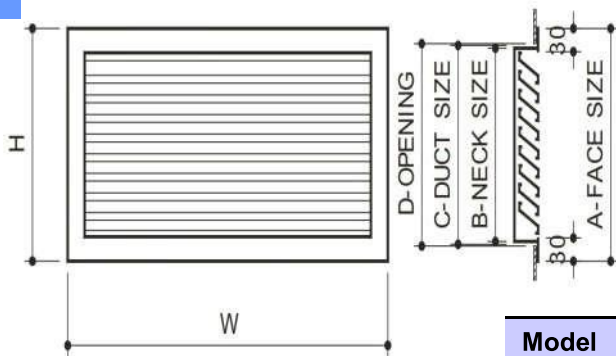
- Functioned as fresh air grille and return air grille.
- Suitable for construction work which require good designs.
- Rain proof. Open air installation.
- Possible attachment to the wall or to the ventilation duct.
- Possible attachment with insects and dust filters.

Material:

- Extruded Aluminum



WPD



Dimensions

Model	Face size	Neck size	Duct size	Ceiling size	Flexible ductsize
WPD	W x H	W - 50	W - 40	W-30	
		H - 50	H - 40	H - 30	
	300 x 200	250 x 150	260 x 160	270 x 170	D150
	400 x 200	350 x 150	360 x 160	370 x 170	D150
	400 x 300	350 x 250	360 x 260	370 x 270	D250

Basic Performance data

Neck size	Velocity	1	1.5	2	2.5	3	3.5	4
300x200	m ³ /s	0.02	0.03	0.04	0.05	0.06	0.071	0.081
	m ³ /h	73	109	145	181	218	254	290
400x200	m ³ /s	0.029	0.043	0.057	0.071	0.086	0.101	0.114
	m ³ /h	103	154	206	257	308	360	411
400x300	m ³ /s	0.049	0.073	0.098	0.122	0.147	0.171	0.196
	m ³ /h	176	264	353	441	529	617	705

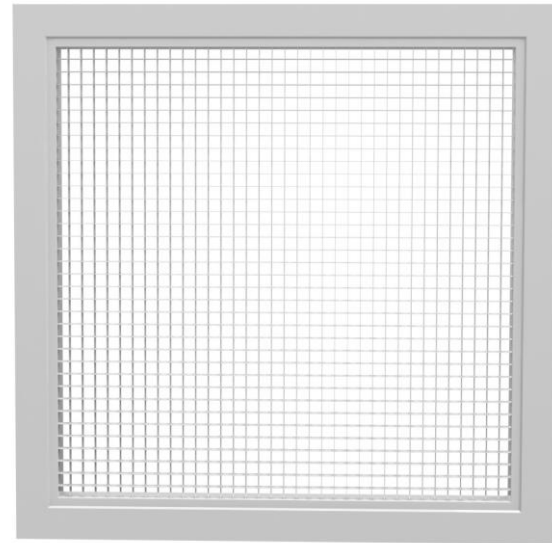
Egg Crate Diffuser

Application:

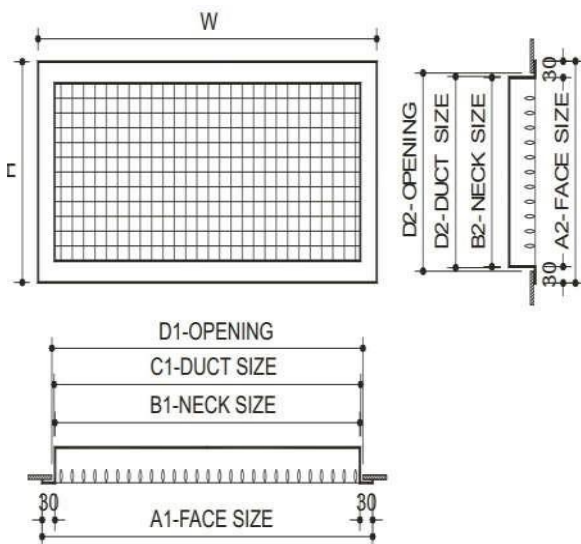
- Functioned as large size air supplying and returning doors.
- Kidney shaped bars can be adjusted upon customer's requests.

Material:

- Extruded Aluminum



ECD



Dimensions

Face size	Neck size
WxH	W-50
200x200	150x150
300x300	250x250
400x400	350x350
500x500	450x450
600x600	550x550

Basic Performance data

Neck size	Velocity	1	1.5	2	2.5	3	3.5	4
300x200	m ³ /s	0.025	0.038	0.050	0.063	0.076	0.188	0.101
	m ³ /h	91	136	181	227	272	318	363
400x200	m ³ /s	0.036	0.054	0.071	0.089	0.107	0.125	0.143
	m ³ /h	129	193	257	321	386	450	514
400x300	m ³ /s	5.0	7.8	10.4	11.5	13.8	14.6	16.7
	m ³ /h	< 22	< 26	< 29	< 31	< 35	< 38	< 41

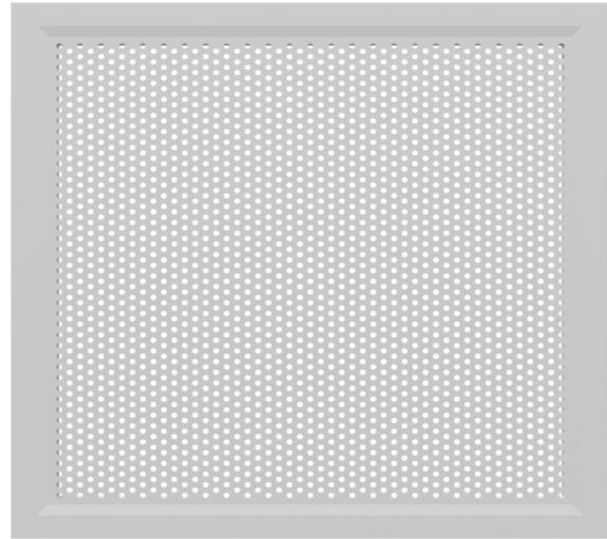
Air distribution devices

Perforated Face Diffuser

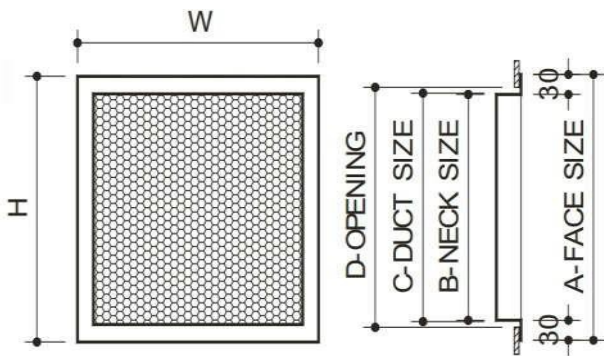
Application:

- Functioned as air supplying and returning doors.
- Equipped with filters.
- Suitable for health services.

Material:



PFD



Dimensions

Face size	Neck size	Duct size	Ceiling size	Flexible size
W x H	W - 50	W - 40	W - 30	
200 x 200	150 x 150	160 x 160	170x 170	D100
300 x 300	250 x 250	260 x 260	270 x 270	D150
400 x 400	350 x 350	360 x 360	370 x 370	D200
500x500	450x450	460x460	470x470	D250
600 x 600	550 x 550	0 x 560	570 x 570	D300

Basic Performance data

Neck size	Velocity	1	1.5	2	2.5	3	3.5	4
300x300	m ³ /s	0.0317	0.0475	0.0634	0.0792	0.095	0.1109	0.1267
	m ³ /h	114.05	171.07	228.1	285.12	342.14	399.17	456.19
500x500	m ³ /s	0.1065	0.1597	0.213	0.2662	0.3194	0.3727	0.4259
	m ³ /h	383.33	574.99	766.66	958.32	1150	1341.6	1533.3
600x600	m ³ /s	0.1604	0.2406	0.3208	0.401	0.4811	0.5613	0.6415
	m ³ /h	577.37	866.05	1154.7	1443.4	1732.1	2020.8	2309.5

Round Diffuser

Application:

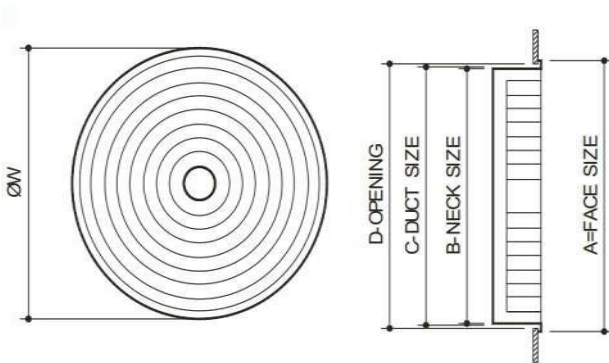
- Functioned as air-supplying and air returning doors.
- Possible attachment with VCD valves on the ceiling.

Material:

- Extruded Aluminum



RD



Dimensions

Face size	Neck size	Duck size
D	D - 205	D - 200
300	95	D100
400	195	D200
500	295	D300
600	345	D400

Basic Performance data

Neck size	Velocity	1	1.5	2	2.5	3	3.5	4
300	m ³ /s	0.042	0.064	0.085	0.106	0.127	0.148	0.170
	m ³ /h	152.6	228.9	305.2	381.5	457.8	534.1	610.4
400	m ³ /s	0.075	0.113	0.151	0.188	0.226	0.264	0.301
	m ³ /h	271.3	406.9	542.6	678.3	813.9	949.5	1085.2
500	m ³ /s	0.118	0.177	0.236	0.294	0.353	0.412	0.471
	m ³ /h	423.9	635.9	847.8	1059.8	1271.7	1483.7	1695.6
600	m ³ /s	0.17	0.254	0.339	0.424	0.509	0.593	0.678
	m ³ /h	610.4	915.6	1220.8	1256	1813.2	2136.5	2441.7

Air distribution devices

Ball Jet Diffuser

Application:

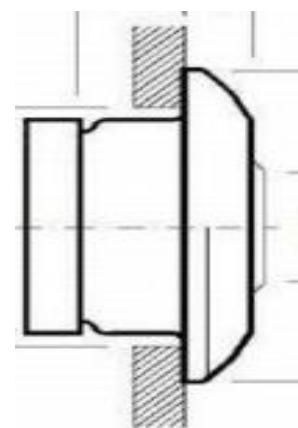
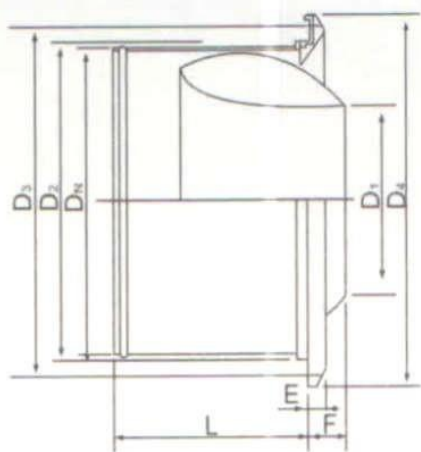
- Mainly used in area where the a/c outlets are far away from the people moving around, such as airport, concert hall, theater, museum,...

Material:

- Extruded Aluminum



BJD



Basic Performance data

Neck size	D1	D2	D3	D4	L	E	F	Air volume (m3/h)	Range (m)
100	100	149	48	73	76	22	0	450	30
125	125	173	62	90	95	24	0	600	30
150	151	199	76	108	110	23	5	800	30
200	203	265	107	152	138	27	4	1094	30
250	252	310	128	195	175	25	7	1368	30
315	318	378	180	240	200	30	18	1680	30
400	399	468	223	330	227	31	46	2710	30
450	448	523	275	375	220	32	33	3200	30
500	494	583	285	430	250	35	63	4000	30

Round Diffuser Rotate Style - Cửa gió tròn có núm xoay

Application - Ứng dụng

- Functioned as air-supplying and air-returning doors.

Được sử dụng làm cửa gió hồi và cửa gió cấp

- Air grill attachment with VCD valves on the top.

Cửa gió gắn kèm van VCD được gắn trực tiếp trên cổ.



RD-D

Material - Vật liệu:

Extruded Aluminum

Nhôm định hình

Round Volume Damper–GI Sheet

Van gió tròn–Tôn tráng kẽm

Dimensions - Kích thước



Face size	VD	Flexible Duct
Kích thước bề mặt	Van gió tròn	ống gió mềm
D	VD	FD
320	150	D150
450	200	D200
600	250	D250

Basic Performance data - Dữ liệu cơ bản

Neck size	Velocity	1	1.5	2	2.5	3	3.5	4
Kích thước cổ	Lưu lượng kk ra khỏi cửa							
300	m ³ /s	0.042	0.064	0.085	0.106	0.127	0.148	0.170
	m ³ /h	152.6	228.9	305.2	381.5	457.8	534.1	610.4
400	m ³ /s	0.075	0.113	0.151	0.188	0.226	0.264	0.301
	m ³ /h	271.3	406.9	542.6	678.3	813.9	949.5	1085.2
500	m ³ /s	0.118	0.177	0.236	0.294	0.353	0.412	0.471
	m ³ /h	423.9	635.9	847.8	1059.8	1271.7	1483.7	1695.6
600	m ³ /s	0.17	0.254	0.339	0.424	0.509	0.593	0.678
	m ³ /h	610.4	915.6	1220.8	1256	1813.2	2136.5	2441.7

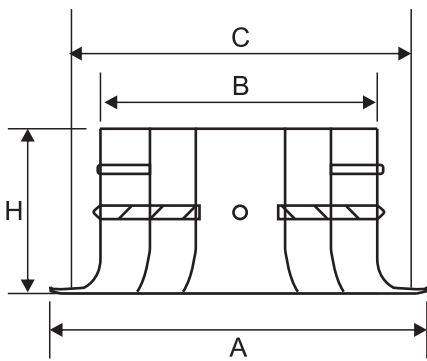
Round Jet Air Diffuser

Round Jet Air Diffuser - RDT



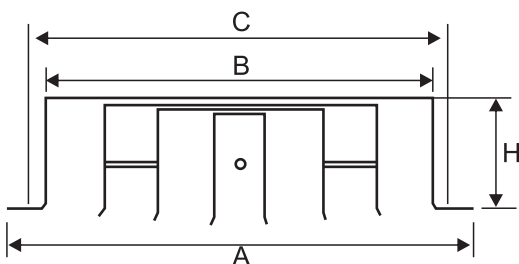
This diffuser is specially designed for HVAC equipment and is mainly used for large buildings such as sports centers, airports, entertainment facilities and industrial zones. The diffuser features low noise operation, and the air supply direction can be adjusted to achieve long-distance airflow and jet speed.

Cửa gió này được thiết kế chuyên dụng cho hệ thống HVAC, thường sử dụng cho các công trình lớn như nhà thi đấu, sân bay, trung tâm giải trí và khu công nghiệp. Sản phẩm hoạt động với độ ồn thấp, có thể điều chỉnh hướng gió để đạt khoảng cách thổi xa và tốc độ gió phù hợp.



No.	Model	Face Size	Neck Size	Height	Installation Size
		A (mm)	B (mm)	H (mm)	C (mm)
1	Φ150	Φ212	Φ143	95	Φ170
2	Φ200	Φ260	Φ190	115	Φ220
3	Φ250	Φ315	Φ242	135	Φ270
4	Φ300	Φ370	Φ298	160	Φ320
5	Φ350	Φ420	Φ338	200	Φ370
6	Φ400	Φ473	Φ390	215	Φ420
7	Φ450	Φ530	Φ440	236	Φ470

Round Jet Air Diffuser – RDTS

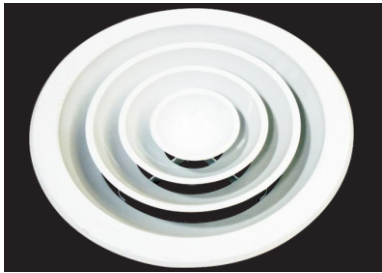


No.	Model	Face Size	Neck Size	Height	Installation Size
		A (mm)	B (mm)	H (mm)	C (mm)
1	Φ150	Φ198	Φ147	41	Φ150
2	Φ200	Φ248	Φ198	47	Φ210
3	Φ250	Φ310	Φ240	42	Φ260
4	Φ300	Φ360	Φ297	50	Φ310
5	Φ350	Φ410	Φ349	41	Φ360
6	Φ400	Φ460	Φ397	41	Φ410

Round Air Diffuser / Cửa gió khuếch tán tròn

Cửa gió khuếch tán gió tròn được sản xuất bằng công nghệ đập nguyên khối. Phần liên kết trung tâm được cố định bằng vít, lõi khuếch tán có thể tháo rời giúp thuận tiện cho việc lắp đặt và bảo trì.

Sản phẩm có thiết kế đẹp, trọng lượng nhẹ và khả năng phân phối gió hiệu quả. Thường được sử dụng cho khách sạn, nhà hát, trung tâm thương mại và các công trình thương mại lớn.

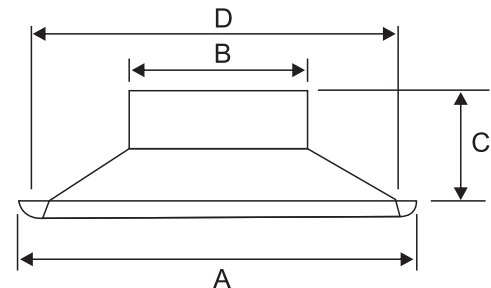


RD -A

No.	Model	Face Size	Neck Size	Height	Installation Size	Layer
		A (mm)	B (mm)	C (mm)	D (mm)	
1	Φ220	Φ225	Φ96	60	Φ150	2
2	Φ250	Φ248	Φ96	58	Φ200	2
3	Φ300	Φ297	Φ147	58	Φ250	3
4	Φ350	Φ346	Φ197	58	Φ300	3
5	Φ380	Φ378	Φ227	58	Φ330	4
6	Φ400	Φ395	Φ248	58	Φ350	4
7	Φ450	Φ445	Φ295	58	Φ400	5
8	Φ500	Φ497	Φ344	58	Φ450	5
9	Φ530	Φ528	Φ375	63	Φ480	6
10	Φ550	Φ547	Φ398	54	Φ500	6
11	Φ600	Φ598	Φ447	58	Φ550	7
12	Φ650	Φ653	Φ500	62	Φ600	7



RD -B

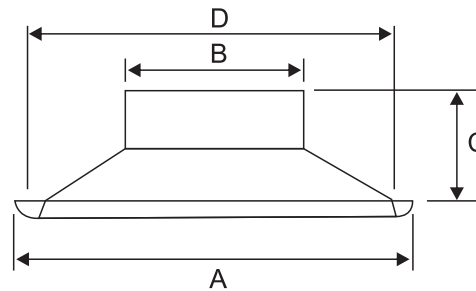


No.	Model	Face Size	Neck Size	Installation Size	Layer
		A (mm)	B (mm)	D (mm)	
1	Φ150	Φ300	Φ145	Φ250	3
2	Φ200	Φ400	Φ195	Φ350	4
3	Φ250	Φ450	Φ245	Φ400	4
4	Φ300	Φ500	Φ295	Φ450	4
5	Φ350	Φ550	Φ345	Φ500	5
6	Φ400	Φ600	Φ395	Φ550	5

Round Air Diffuser / Cửa gió khuếch tán tròn

Round air diffuser is produced by one-piece stamping technology. The center connection is fixed by screws, and the core components can be separated from the frame for easy installation and maintenance.

The diffuser has an attractive appearance, light weight and excellent air distribution performance. It is widely used in hotels, theaters, shopping malls and large commercial buildings.



RD -C

No.	Model	Face Size A (mm)	Neck Size B (mm)	Installation Size D (mm)	Layer
1	Φ150	Φ300	Φ145	Φ250	3
2	Φ200	Φ400	Φ195	Φ350	4
3	Φ250	Φ450	Φ245	Φ400	4
4	Φ300	Φ500	Φ295	Φ450	4
5	Φ350	Φ550	Φ345	Φ500	5
6	Φ400	Φ600	Φ395	Φ550	5



RD -E

No.	Model	Face Size (mm)	Neck Size (mm)
1	Φ150	Φ254	Φ144
2	Φ200	Φ304	Φ194
3	Φ250	Φ354	Φ244
4	Φ300	Φ404	Φ294
5	Φ350	Φ454	Φ344

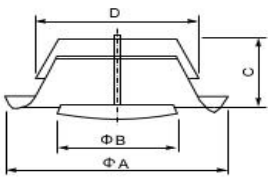


RD -F

No.	Model	Face Size (mm)	Neck Size (mm)
1	Φ150	Φ340	Φ140
2	Φ200	Φ430	Φ195
3	Φ250	Φ515	Φ246
4	Φ300	Φ610	Φ293

Air distribution devices

Metal Air Valves




EV-S
Stainless air valves

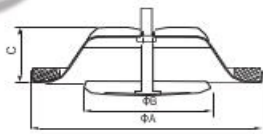
EV Exhaust Air Valves

- Suitable for offices, houses, etc, easy installation on the wall or in the ceiling.
- Manufactured from sheet steel painted white
- Available also in Stainless steel version EV-S.
- The valve body is equipped with a cellular plastic gasket to form an air-tight seal.
- The air flow is adjusted by rotating the control disc.
- Supplied with mounting ring.

Semi gloss finish 70%
specular finish 90%


- **Packing: hardboard box in white or brown colour.**

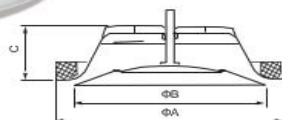
EV	A	B	C	D	
80	115	62	42	77.5	7
100	138	75	40	97.5	7
125	164	100	46	122.5	7
150	202	120	50	147.5	7
160	211	130	54	157.5	7
200	248	158	63	197.5	7
250	305	215	75	248	7



NEV


- Suitable for offices, houses, etc, easy installation on wall or in the ceiling.
- Manufactured from sheet steel painted white
- The valve body is equipped with a cellular plastic gasket.
- The air flow is adjusted by rotating the control disc.
- Supplied with mounting ring.

NEV	A	B	C	
80	114	62	37	7
100	134	77	40	7
125	165	101	46	7
150	195	121	54	7
160	198	121	54	7
200	247	160	64	7



NSV

- Suitable for offices, houses, etc, easy installation in the ceiling.
- Manufactured from sheet steel painted white
- The valve body is equipped with a cellular plastic gasket.
- The air flow is adjusted by rotating the control disc.
- Supplied with mounting ring.

NSV	A	B	C	
80	114	95	37	7
100	134	112	40	7
125	165	137	46	7
150	195	160	54	7
160	195	160	54	7
200	247	207	64	7

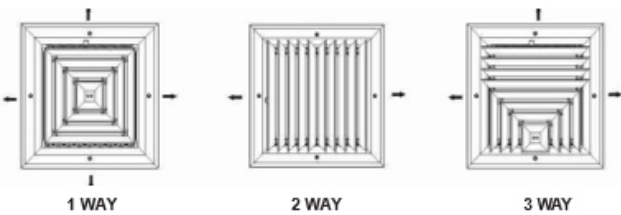
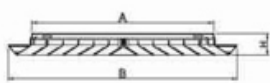
Air distribution devices



CD-SD

- The diffuser CD-SD is used for the supply and exhaust of cooled and heated air.
- Completely in extruded aluminium; satin anodized or powder-coated white RAL9010, 9016.
- The central core is removable for easy maintenance.
- Simple and pleasant appearance.
- Accessories: **OBD opposite blade damper**

Neck adapter



CD-SD	A	B	H
6"	140	230	55
8"	190	280	55
9"	216	306	55
10"	240	330	55
12"	292	382	55

Circular Diffusers



CD-RA

- Used for supply and exhaust of the hot or cold air.
- All aluminium construction.
- Powder-coated or anodized finish, standard colour RAL9010, 9016.
- Assembled with integral butterfly volume damper made of plastic.
- The rotatable inner core offers free access to the integral butterfly plastic volume damper.

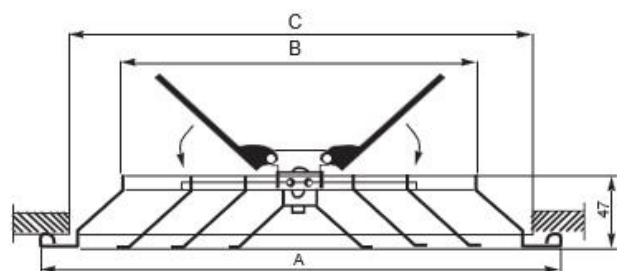


Butterfly damper in plastic

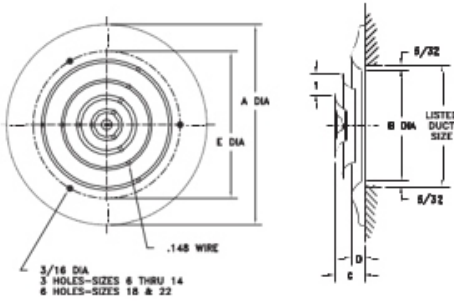


Vacuum plastic film packing

CD-RA	A	B	C
150	257	149	225
200	307	199	275
250	357	249	325
300	407	299	375
350	457	349	425



Air distribution devices



CD-RC

- All-steel construction.
- Step-down diffuser rings deflect air stream 360 degrees.
- For ceiling air diffusion application.
- Round face.
- Bright White finish.

Size	A DIA	B DIA	C	D	E DIA
6	9-15/16	5-11/16	1-3/64	11/16	6-1/2
8	11-15/16	7-11/16	1-7/32	11/16	8-1/2
10	13-15/16	9-11/16	1-25/64	11/16	10-1/2
12	15-15/16	11-11/16	1-9/16	11/16	12-1/2
14	17-15/16	13-11/16	1-3/4	11/16	14-1/2
18	23	17-11/16	2-19/32	11/16	21-3/4

Swirl Diffusers

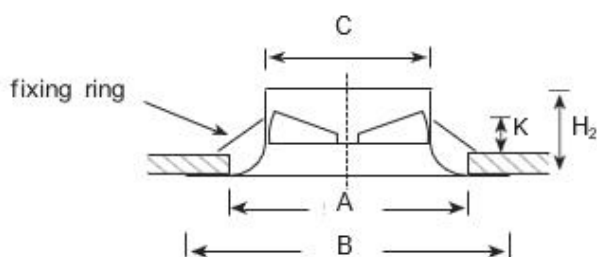


SD-A

- Applied to premium places and industrial workshop.
- Blow in helix, high inductivity, reduce temperature rapidly with low noise.
- With excellent performance, SD-A could be either installed flatly with the ceiling or hung on construction objects, or on the air pipe inside of enclosed ceiling.
- Both the panel and diffusing ring are painted white (RAL9010) standard.



SPECS	A	B	C	H ₂
125	165	205	124	70
160	210	250	159	95
200	260	310	199	110
250	330	380	249	130
315	395	435	314	165



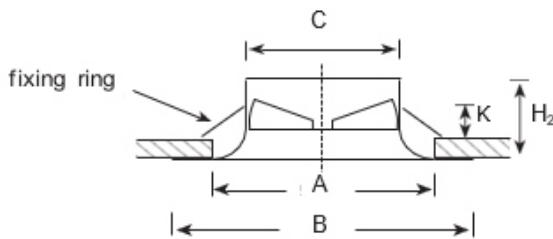
Swirl Diffusers



SD-A

- Applied to premium places and industrial workshop.
- Blow in helix, high inductivity, reduce temperature rapidly with low noise.
- With excellent performance, SD-A could be either installed flatly with the ceiling or hung on construction objects, or on the air pipe inside of enclosed ceiling.
- Both the panel and diffusing ring are painted white (RAL9010) standard.

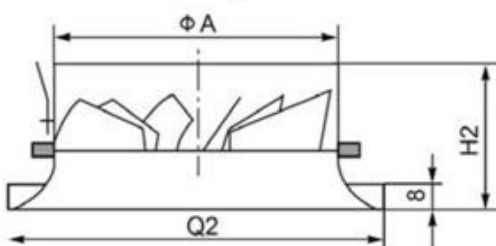
SPECS	A	B	C	H ₂
125	165	205	124	70
160	210	250	159	95
200	260	310	199	110
250	330	380	249	130
315	395	435	314	165



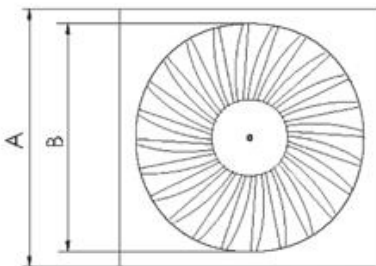
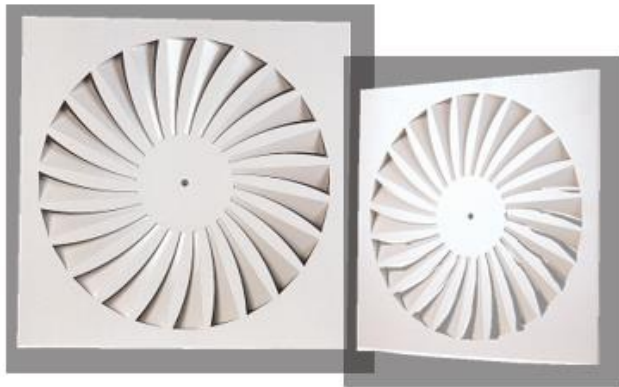
SD-R

- the positive air outlet assembled with air deflector and turbine type blades, the blades could be adjustable by manual or by electric device to reach the goal of blast steadily.
- All Aluminum construction painted in RAL9010 or 9016.

SD-R	A	H ₂	Q ₂
250	295	195	370
315	368	212	468
350	398	216	500
400	456	232	567
500	559	233	655



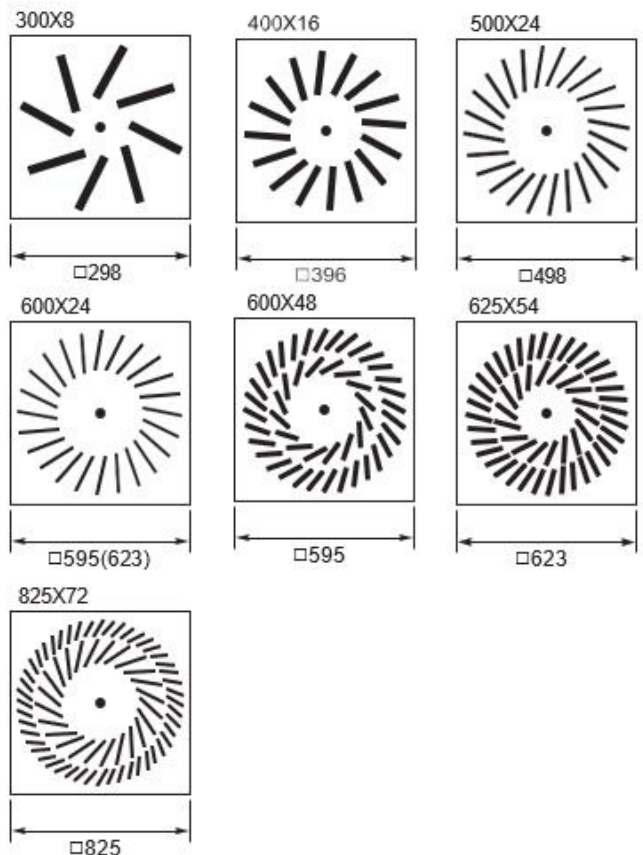
Air distribution devices



SD-B

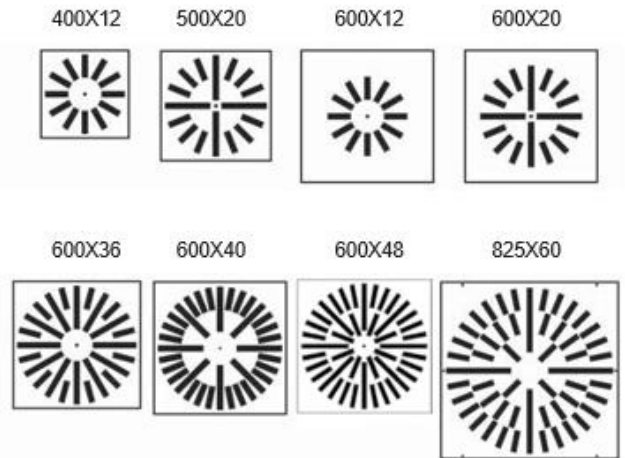
- SD-B swirl diffusers consist of fixed, rapidly arranged air control blades.
 - The diffuser face of SD-B offers a high volume flow rate at low sound power levels
 - Available in 4 sizes to meet architectural requirements, the face plate can be circular or square.
 - Square face plate are designed for T-bar ceiling.
 - Powder-coated surface finish, standard ~~colour~~ **colour**.
- ⊕ RAL9010, 9016.

SD-B	A	B
300	595	254
400	595	336
500	595	440
600	595	530



SD-CA

- The swirl diffuser SD-CA be used for either supply or exhaust air application.
- The diffuser be supplied with either circular or square face plate depending on architectural requirements.
- The face plate is in galvanized sheet steel, powder coated white (RAL 9010 or RAL 9016).
- Control blades are made from ~~polystyrol~~ **polystyrene**, with black as standard or white on request.
- All sizes are suitable for flush mounting into a ceiling.
- Available in the sizes above.

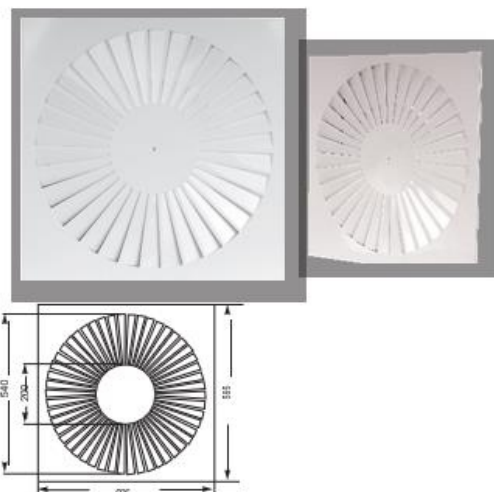


SD-CB

- The swirl diffuser SD-CB be used for either supply or extract air application.
- The diffuser be supplied with square face plate.
- The face plate is in galvanized sheet steel, powder coated white (RAL 9010 or RAL 9016).
- Control blades are made from polystyrol, with black as standard or white on request.
- All sizes are suitable for flush mounting into a ceiling.
- Available in the sizes listed below.

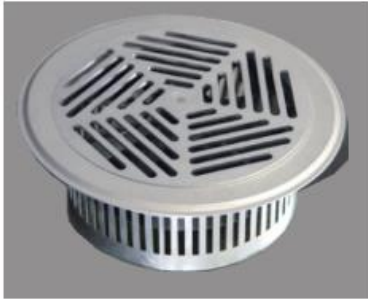
SD-CB	Dimensions	Slot numbers
400X12	395X395	12
500X20	495X495	20
600X12	595X595	12
600X20	595X595	20
600X36	595X595	36
600X40	595X595	40
600X48	595X595	48
825X60	820X820	60

SW



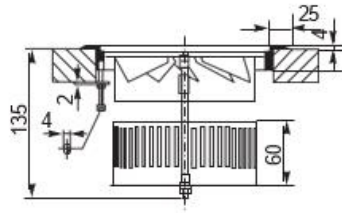
- Swirl diffuser SW generate high-quality, diffuse air flow according to the principle of turbulent mixing air flow.
- The diffuser SW can produce comfortable indoor air conditions.
- Low sound power level and pressure loss.
- For installation flush with suspended false ceiling or below closed false ceiling.

Air distribution devices



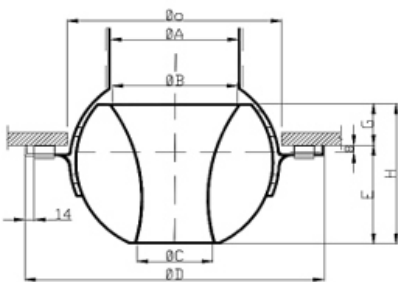
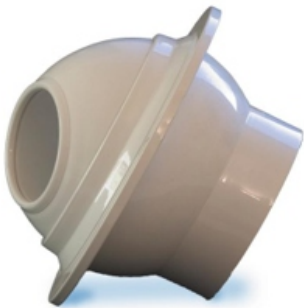
Circular swirl floor diffuser FDS

- Circular air supply diffuser with swirl function from mounting in floors.
- Diffuser manufactured in cast Aluminium, drip trap and internal swirl constructed in galvanized steel sheet.
- High induction levels.
- A cleanable diffuser.
- Sizes: $\Phi 150$, $\Phi 200$



JN-T

- Made of Aluminum powder coated in color RAL9010 or 9016
- Mounted on walls or directly on rectangular or round ducts
- Suitable for large spaces like in concert halls, museums, theatres, shopping centers, airports etc
- The up to 45 degrees possible inclination of the jet helps directing the air to the right places
- Throws of more than 20 meters can be achieved
round neck diameters of 150mm,200mm,250mm,300mm,350mm



JN-T	A	B	C	D	E	G	H	O
150	125	120	70	235	73	40	114	185
200	175	170	100	300	92	58	150	235
250	225	210	130	350	115	70	185	285
300	250	250	160	405	142	70	216	335
350	320	320	190	450	170	70	250	380

JN-R



- Made of aluminum
- Deliver large volumes of airflow at long throw and low noise level, the durational Jet Ring diffusers are most suitable for large size spaces as theaters, concert halls, airports, museums and entertainment facilities.
- Finish: Powder Coated in Color RAL9010 or 9016, other color on request.
Neck size: 150,200,250,300,315,350,400

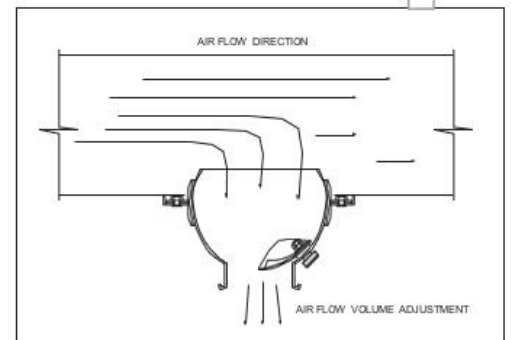
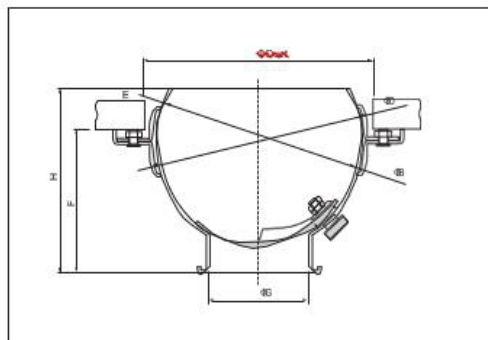
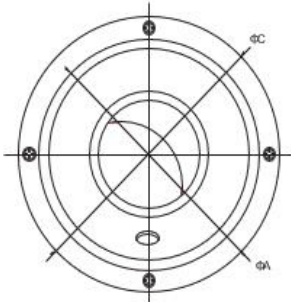
Spherical Diffuser SPD

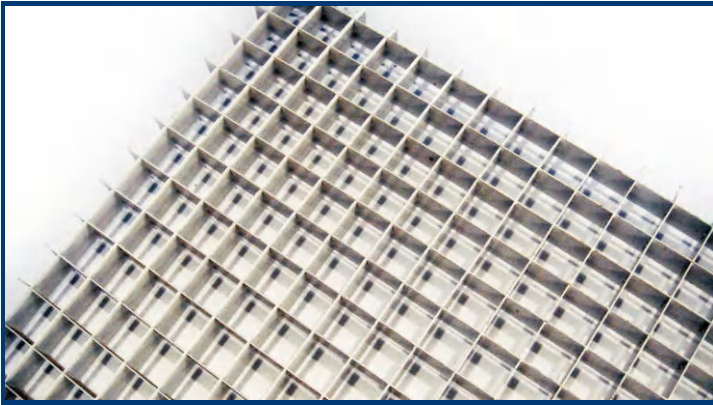
- Made from aluminium.
- Anodized, or powder-coated surface finish.
- Rotable body can be rotated in any direction off center.
- Air volume is controlled easily with the turn of a knob.
- Available in size: 100,125,150,200,250,300 inches.



Technical data Dimension data mm

Size	A	B	C	F	G	H	N	Max Angle
CL-100	102	127	145	71.8	50	95	113	95
CL-125	127	155	178	85.8	64	114	138	114
CL-150	150	178	200	96.8	74	130	162	130
CL-200	193	230	255	116.8	99	156	205	156
CL-250	250	290	315	152	135	216	262	216
CL-300	300	340	366	176.5	160	250	313	250

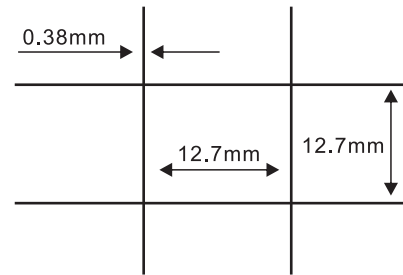




Egg Crate

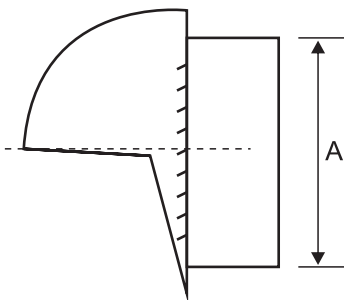
Egg Crate chủ yếu được sử dụng cho miệng gió dạng lưới nhôm trong hệ thống điều hòa trung tâm. Sản phẩm thường dùng cho cửa gió tàu hỏa, tàu điện ngầm và trần nhôm trang trí dạng lưới.

Chất liệu: Nhôm ,Inox Ss201, 304
 Độ dày khung: 0.38mm / 0.47mm
 Kích thước ô lưới: 12.7 x 12.7mm
 Kích thước tiêu chuẩn: 1200 x 600mm, 1200 x 1200mm
 Có thể sản xuất theo kích thước yêu cầu của khách hàng



Round Exhaust Air Vent – RLS

Miệng gió này phù hợp với môi trường có côn trùng và nước mưa. Sản phẩm giúp ngăn côn trùng và nước xâm nhập hiệu quả đồng thời vẫn đảm bảo lưu thông không khí. Thích hợp cho những nơi yêu cầu chống côn trùng và dễ dàng vệ sinh.
 Chất liệu: Inox Ss201, 304



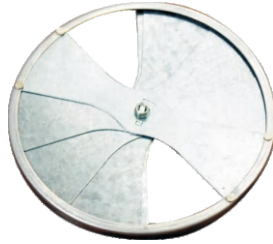
No.	1	2	3	4	5	6	7
Model	Φ75	Φ100	Φ125	Φ150	Φ200	Φ250	Φ300
Neck Size A (mm)	Φ65	Φ93	Φ120	Φ145	Φ195	Φ245	Φ295

Round Opposed Blade Damper

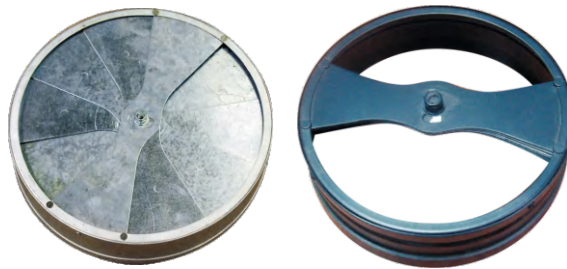
Van gió tròn điều chỉnh được thiết kế để đóng mở trực tiếp và thay đổi lưu lượng gió cấp. Van có thể điều chỉnh tốc độ gió đồng đều thông qua cơ cấu đồng bộ cánh van. Thiết bị dễ dàng thao tác bằng núm điều chỉnh và có thể lắp đặt trực tiếp tại cổ nối miệng gió để thay đổi lưu lượng không khí.

Có 2 loại van:

- Chất liệu thép
- Chất liệu PVC

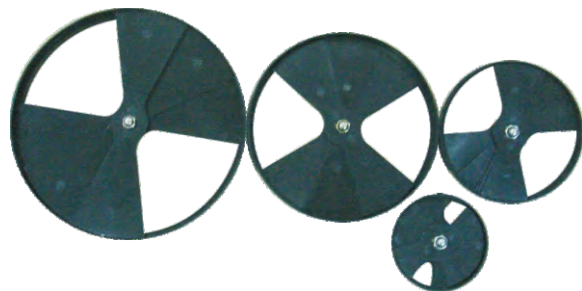


No.	1	2	3	4	5	6	7
Model	Φ145	Φ195	Φ245	Φ295	Φ345	Φ395	Φ445
Height (mm)	10	12	12	12	12	12	12



No.	1	2	3	4	5	6
Model	Φ145	Φ195	Φ245	Φ295	Φ345	Φ395
Height (mm)	58	80	80	58	67	56

ABS Round Damper



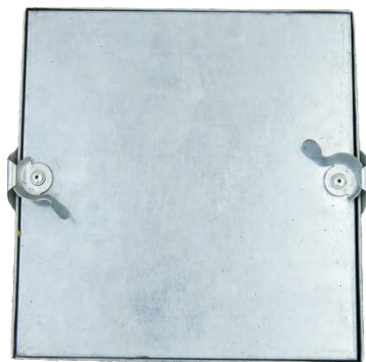
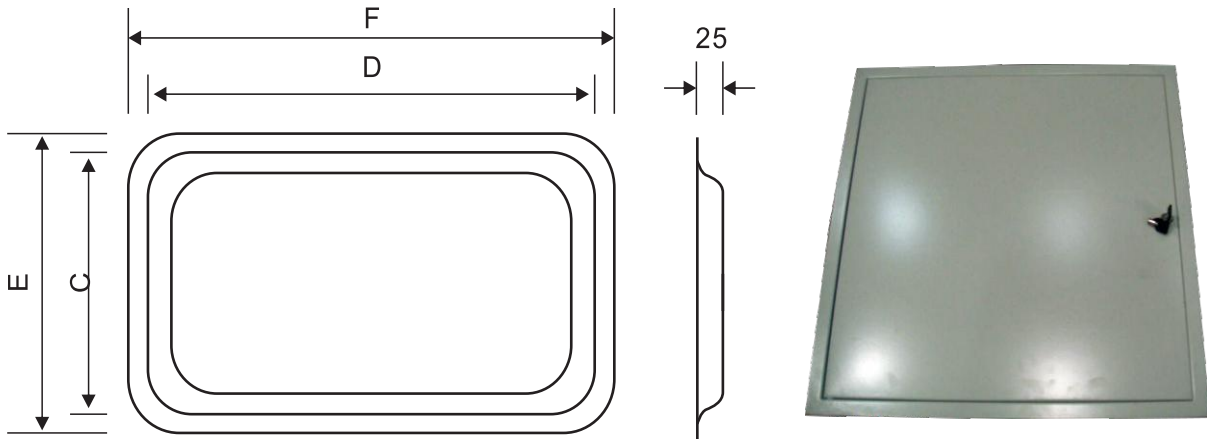
No.	1	2	3	4	5	6	7	8	9
Model	Φ100	Φ150	Φ204	Φ252	Φ303	Φ315	Φ354	Φ400	Φ456

Access Door / Cửa thăm trần

Sản phẩm chủ yếu được cấu tạo từ khung cửa và lõi cửa, được dập tạo hình bằng thép tấm dày 0.6 x 0.8mm.

Sản phẩm có ưu điểm chống gỉ tốt, kết cấu chắc chắn và tính thẩm mỹ cao.

Bên trong lõi cửa được tích hợp lớp vật liệu cách nhiệt dày 22mm. Để đảm bảo khả năng kín khí và ổn định nhiệt độ, mép cửa được gắn gioăng cao su chịu nhiệt.



Code Model	Face Size E × F (mm)	Neck Size C × D (mm)	Height (mm)
OAD1003	295 × 135	245 × 85	25
OAD1008	295 × 245	245 × 155	25
OAD1510	430 × 295	380 × 245	25
OAD2015	555 × 425	505 × 375	25
OAD2620	705 × 555	655 × 505	25

Air distribution devices



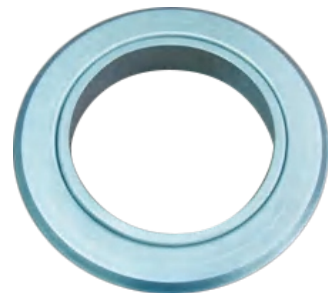
Weather Louver

ABS Rotatable Air Diffuser

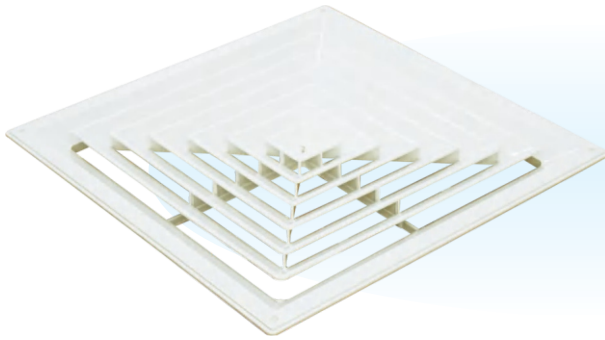


Linear Diffuser

Round Frame



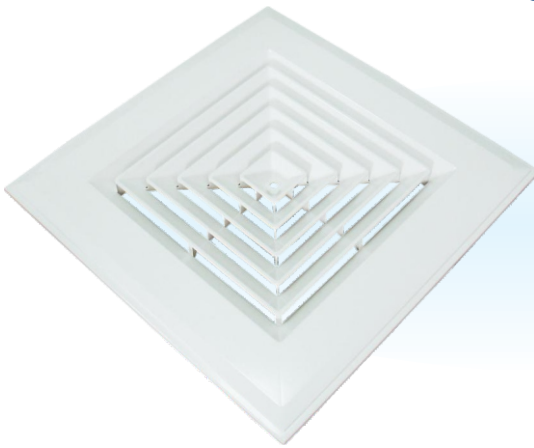
Face Size (mm)	Φ150	Φ170	Φ200	Φ250	Φ300	Φ350	Φ400	Φ450
Neck Size (mm)	Φ95	Φ115	Φ145	Φ195	Φ245	Φ295	Φ345	Φ395
Installation Size (mm)	Φ105	Φ125	Φ155	Φ205	Φ255	Φ305	Φ355	Φ405



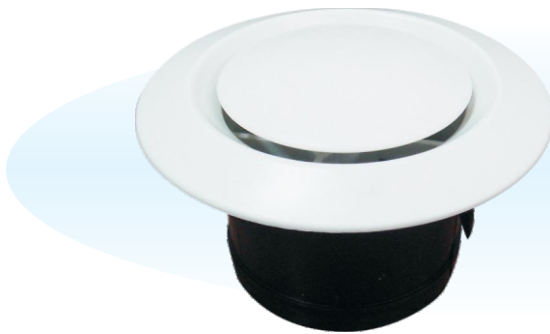
A



ABS Square Diffuser



B



ABS Round Diffuser



Removable Linear Slot Diffuser



Linear Slot Diffuser

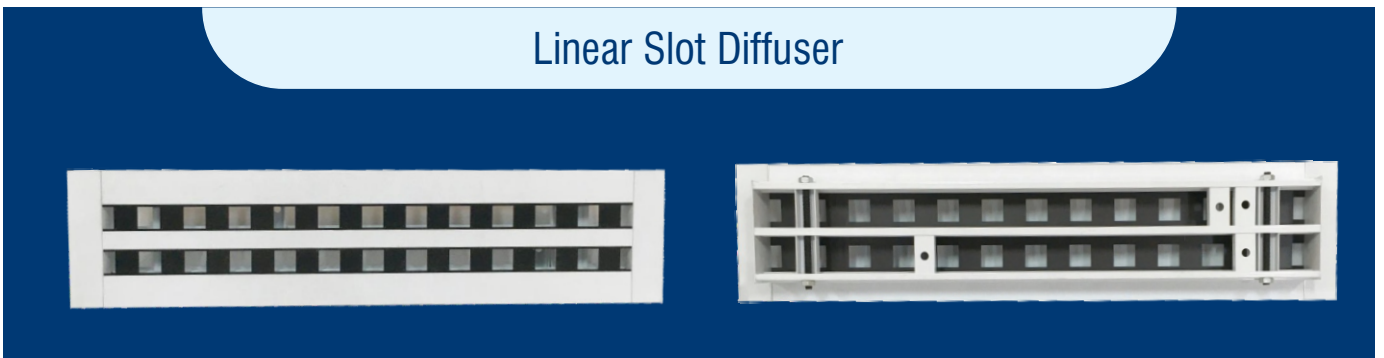
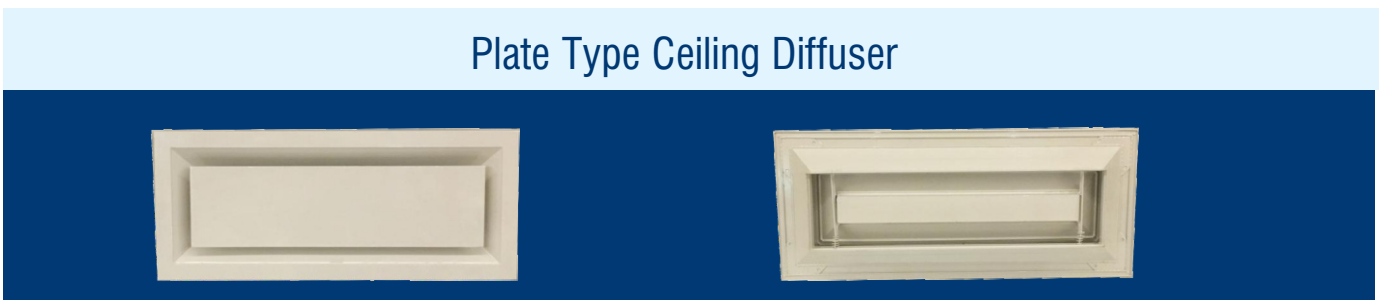


Plate Type Ceiling Diffuser

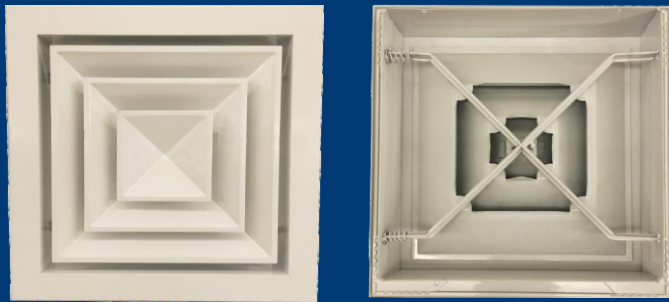


Linear Grille



Air distribution devices

Square Swirl Diffuser



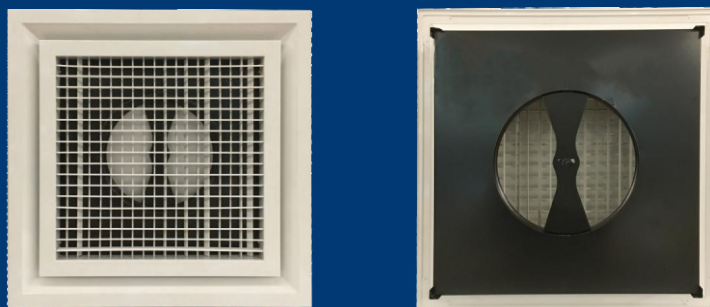
Round Swirl Diffuser



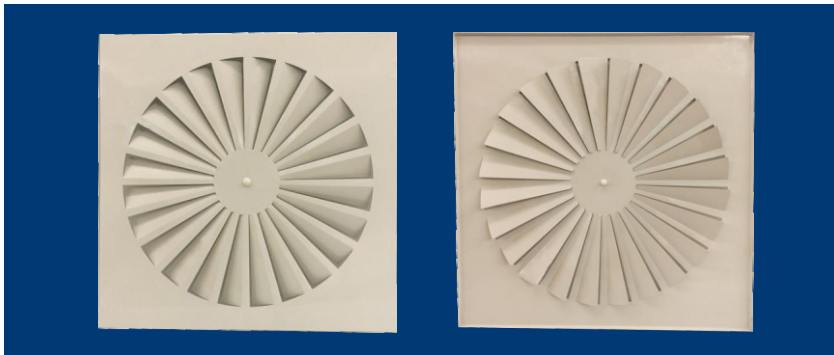
Aluminum Circular Ceiling Diffuser



Aluminum Circular Ceiling Diffuser

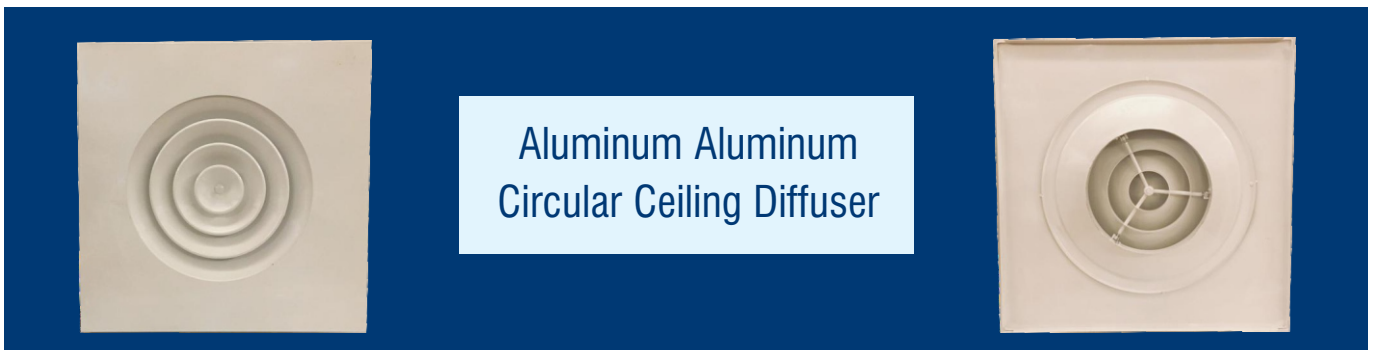
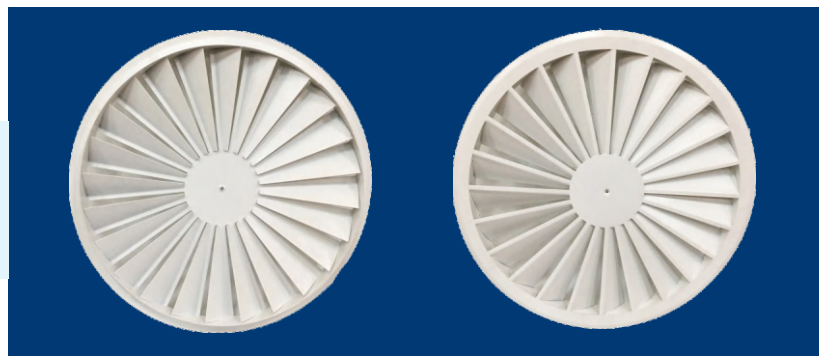


Air distribution devices



Square Swirl Diffuser

Round Swirl Diffuser



Aluminum Aluminum
Circular Ceiling Diffuser

Round Type Ceiling Diffuser



Stainless Steel Air Grille/Cửa gió Inox



Decorative Air Grilles/Cửa gió trang trí



HR-DAG001



HR-DAG002



HR-DAG003



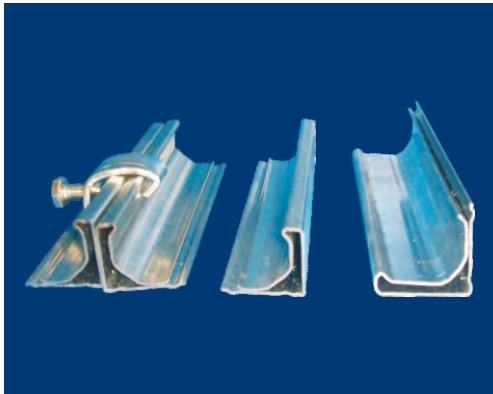
HR-DAG004



HR-DAG005



HR-DAG006



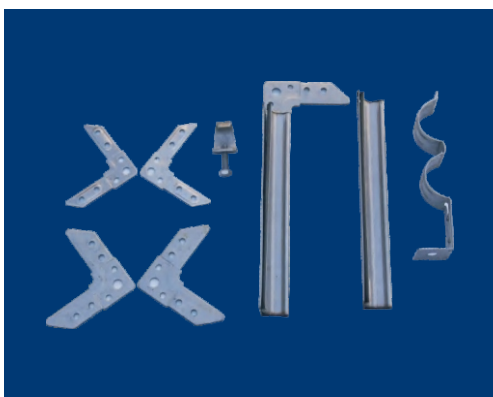
Flange Profile

Item	Specification
Specification	20, 30, 40
Material	Galvanized Iron
Thickness	0.8–1.0mm



Flange Cleat

Item	Specification
Specification	20mm, 30mm
Length	100mm
Material	Galvanized Iron
Thickness	0.8–1.0mm



Stainless Steel

Material	Stainless Steel
-----------------	-----------------

Air distribution devices



G-clamp A

Item	Specification
Description	G-clamps are used for connecting air ducts. Features high efficiency and high strength.
Thickness	3.5mm
Screw	M8 × 25, M8 × 30



G-clamp B

Item	Specification
Description	G-clamps are used for connecting air ducts. Features high efficiency and high strength.
Thickness	3.0mm
Screw	M8 × 25, M8 × 30

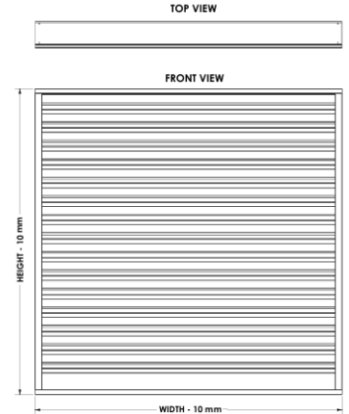
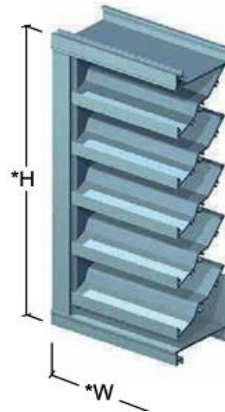


G-clamp C

Item	Specification
Description	G-clamps are used for connecting air ducts. Features high efficiency and high strength.
Thickness	2.5mm
Screw	M8 × 16

Air distribution devices

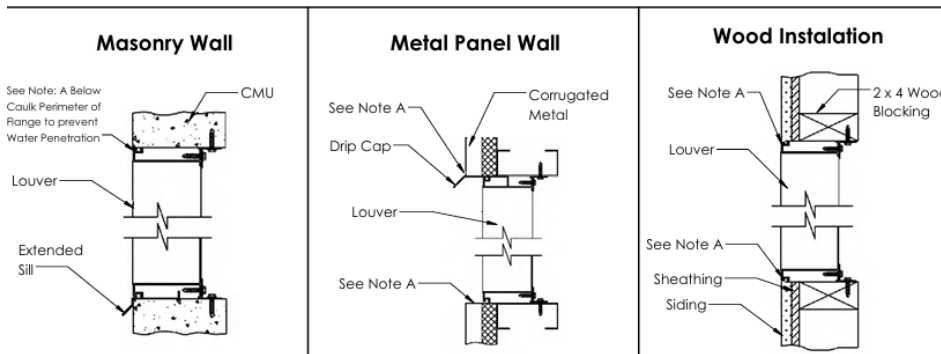
FIXED LOUVER (Aluminum extrusion thickness 2mmT) -Code : LOUVER-EXT2-.....
Type : FL-D-4



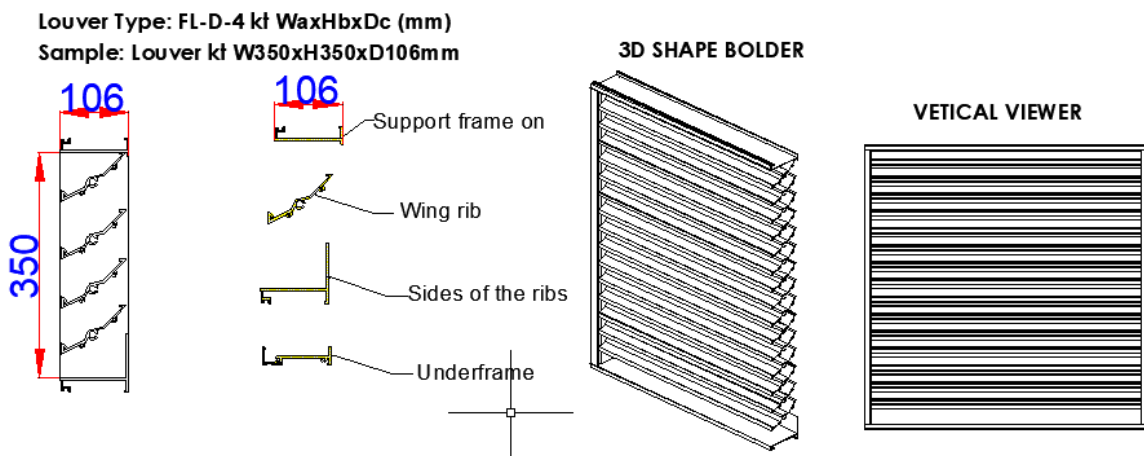
Prodotech Fixed Louvers are blades without operation, neither manual nor electrical. Unlike adjustable louvers, fixed blades are always positioned in the same fixed angle, e. g., 45° or 60°. Prodotech Fixed Louvers are used in buildings wherever there is a need for creating resistance to rainwater, excessive noise, hurricane-type winds, or a combination of these problems - while also ensuring proper airflow.

Prodotech Fixed Louvers are available in Standard Blades and also in Drainable Blades. These louvers are available in Extruded Aluminum, and Galvanized Steel and in different RAL finishes as per the project requirements.

Louver Installation Instructions

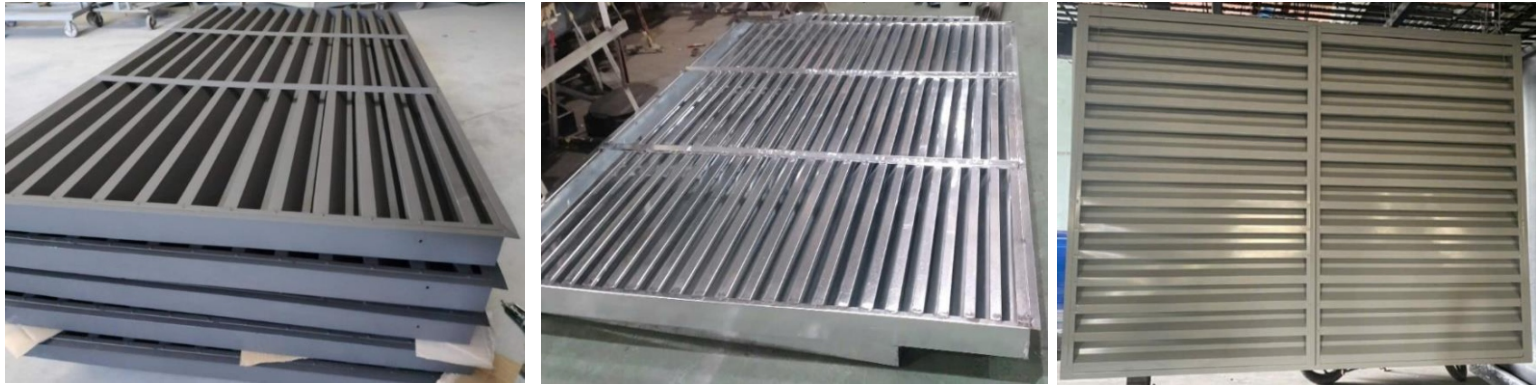


Drawing detail drawing for Louver 350x350 (Type :FL-D-4)

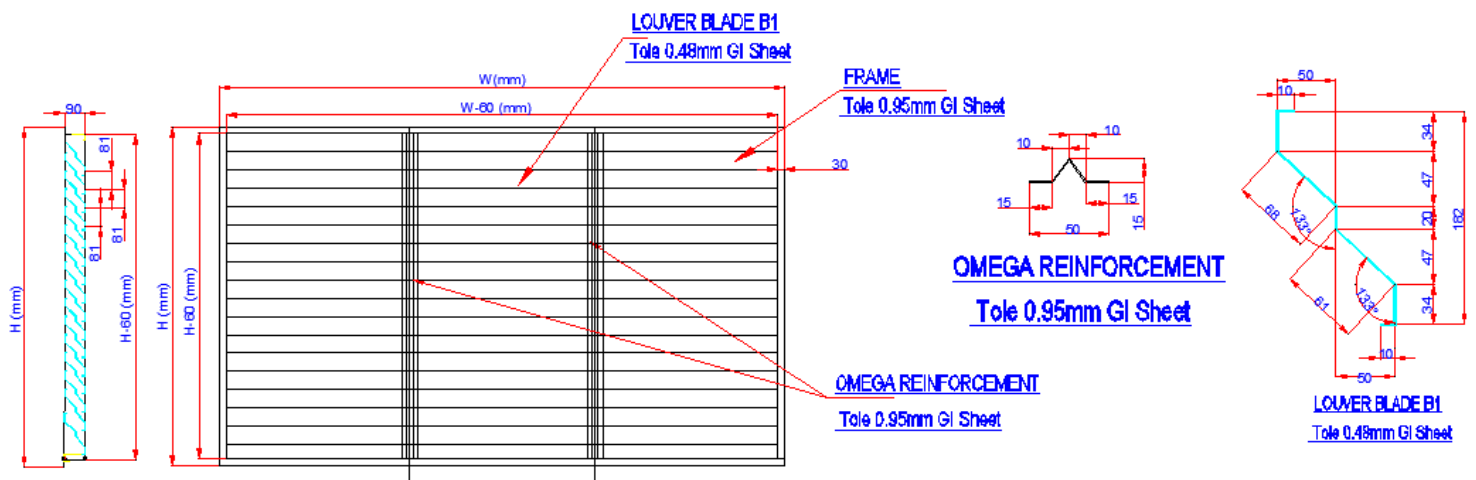


Air distribution devices

LOUVER GI SHEET (Electric Static Powder coating) - Code : LOUVER-GI SHEET.....



Details of fabricating Prodotech louver GI sheet with electrical static powder coating



For louver rainproof air vents with a maximum edge size of $W > 1500\text{mm}$, Prodotech recommends customers switch to using Louver GI Sheet powder-coated designed according to the standards combined by Vingroup and Hợp Lực ME. This louver design ensures good technical performance, excellent rain protection, and reasonable product pricing, providing benefits for contractors.

Advantages of Prodotech Louvers

- + Made from rust-resistant galvanized steel and welded connections, hence the louvers are sturdy and strong
- + Reasonable price suitable for project bidding
- + Excellent rain protection. Able to be powder-coated in multiple colors according to project requirements
- + The design and appearance of the louvers are beautiful and solid.

Images of installing Louver GI Sheet produced by Prodotech at construction site projects.



1 Air distribution devices

Storgare Material Extruded Aluminum



Extruded Aluminum



ALUMINIUM CUTTING TABLE



ALUMINIUM HAND CUTTER



AMADA MACHINE



ALUMINIUM WELDING MACHINE



OVARIAN POWDER COATING



- Note (Note):
- All products conform Prodotech wind door quality management system ISO 9001: 2008
- Products are tested vents Prodotech conformity:
- 1) TCVN 5878: 2007; TCVN 2097-1993; TCVN 197-2002
- 2) Standard Air Diffusion Council (USA) Equipment (Standard door vents world associations ADC)
- 3) SMACNA standard for air grill (Standard SMACNA the vents)



VENT CAP



1 Vent Cap

1. Wall Vent

SUS



Specification / Size	Duct Diameter(mm)	Duct Length(mm)
SUS 100	97	52
SUS 125	120	52
SUS 150	145	62
SUS 160	155	62
SUS 180	175	73
SUS 200	195	73

Specification / Size	Duct Diameter(mm)	Duct Length(mm)
SUS 100LN	97	52
SUS 125LN	120	52
SUS 150LN	145	62

SV



Specification / Size	Duct Diameter(mm)	Duct Length(mm)
SV 100	97	52
SV 125	120	52
SV 150	145	62
SV 160	155	62
SV 180	175	73
SV 200	195	73

SUC



Specification / Size	Duct Diameter(mm)	Duct Length(mm)
SUC 100	97	52
SUC 125	120	52
SUC 150	145	62

SUF



Specification / Size	Duct Diameter(mm)	Duct Length(mm)
SUF 100	97	52
SUF 125	120	52
SUF 150	145	62

Specification / Size	Duct Diameter(mm)	Duct Length(mm)
SUF 100LN	97	52
SUF 125LN	120	52
SUF 150LN	145	62

SUA



Specification / Size	Duct Diameter(mm)	Duct Length(mm)
SUA 100	97	52
SUA 125	120	52
SUA 150	145	62

Specification / Size	Duct Diameter(mm)	Duct Length(mm)
SUA 100LN	97	52
SUA 125LN	120	52
SUA 150LN	145	62

SMS



Specification / Size	Duct Diameter(mm)	Duct Length(mm)
SMS100	97	52
SMS125	120	52
SMS150	145	62
SMS200 / AMS200	195	65
Specification / Size	Duct Diameter(mm)	Duct Length(mm)
SMS 100 LN	97	52
SMS 125 LN	120	52
SMS 150 LN	145	62

SMSR/AMSR



Specification / Size	Length (mm)	Width (mm)
SMSR2626/AMSR2626	255	255
SMSR3636/AMSR3636	355	355
SMSR4646/AMSR4646	455	455
SMSR5656/AMSR5656	555	555
SMSR6666/AMSR6666	655	655

SED



Specification / Size	Length (mm)	Width(mm)	Product high (mm)
SED 1309	130	90	11
SED 1809	180	90	11
SED 3009	300	90	11
SED 1522	150	220	11
SED 1616	160	160	11
SED 2020	200	200	11
SED 2520	245	195	11
SED 3704	370	40	11

SSE110/ASE110



SSE204/ASE204



Specification / Size	Length (mm)	Width (mm)
SSE110 / ASE110	110	54
SSE204 / ASE204	205	61

SSDF



ASDF



Specification / Size	Duct Diameter(mm)	Duct Length(mm)
SSDF93 ASDF93	225	75
SSDF96 ASDF96	225	150
SSDF99 ASDF99	225	225

SUL



Specification / Size	Duct Diameter(mm)	Duct Length(mm)
SUL 100LN	97	52
SUL 125LN	120	52
SUL 150LN	145	62

Vent Cap

SUG



Specification / Size	Duct Diameter(mm)	Duct Length(mm)
SUG 100	97	52
SUG 125	120	52
SUG 150	145	62
SUG 160	155	62
SUG 180	175	73
SUG 200	195	73

SUK



Specification / Size	Duct Diameter(mm)	Duct Length(mm)
SUK 100	97	52
SUK 125	120	52
SUK 150	145	62

Specification / Size	Duct Diameter(mm)	Duct Length(mm)
SUK 100LN	97	52
SUK 125LN	120	52
SUK 150LN	145	62

SUE



Specification / Size	Duct Diameter(mm)	Duct Length(mm)
SUE100	95	22
SUE125	122	24
SUE150	144	26

SUH



Specification / Size	Duct Diameter(mm)	Duct Length(mm)
SUH100	97	15
SUH125	120	15
SUH150	145	15

LMA



Specification / Size	Duct Diameter(mm)	Duct Length(mm)
LMA 100	97	52
LMA 125	120	52
LMA 150	145	62

SCS



Specification / Size	Contour Dimension(mm)	Product high (mm)
SCS 140	φ 140	14
SCS 190	φ 190	14

AIE



Specification / Size	Length (inch)	Width (inch)
AIE 100	97	52
AIE 110	106	52
AIE 125	120	52
AIE 140	136	52
AIE 150	145	62
AIE 160	155	62
AIE 180	175	72
AIE 200	195	72

SUI



Specification / Size	Duct Diameter(mm)	Duct Length(mm)
SUI 100	96	47
SUI 125	120	47

AUA100



Specification / Size	Duct Diameter(mm)	Duct Length(mm)
AUA100	101	280

GUA



Specification / Size	Duct Diameter(inch)	Duct Length(inch)
GUA4"	4"	8"
GUA7"	7"	8"

2. Gable Vent

ASA



Specification / Size	Length (inch)	Width (inch)
ASA0808 / GSA0808	8"	8"
ASA1212 / GSA1212	12"	12"
ASA1218 / GSA1218	12"	18"
ASA1418 / GSA1418	14"	18"
ASA1424 / GSA1424	14"	24"
ASA1824 / GSA1824	18"	24"
ASA2430 / GSA2430	24"	30"
ASA0808CW	8"	8"
ASA1212CW	12"	12"
ASA1218CW	12"	18"
ASA1418CW	14"	18"
ASA1424CW	14"	24"
ASA1824CW	18"	24"
ASA2430CW	24"	30"

GSB



Specification / Size	Length (inch)	Width (inch)
GSB1212	12"	12"
GSB1218	12"	18"
GSB1412	14"	12"
GSB1418	14"	18"
GSB1424	14"	24"

GSC



Specification / Size	Length (inch)	Width (inch)
GSC1212	12"	12"
GSC1218	12"	18"
GSC1412	14"	12"
GSC1418	14"	18"
GSC1424	14"	24"

3. Undereave Vent

GTV



Specification / Size	Length (inch)	Width (inch)
GTV1404	14"	4"
GTV1406	14"	6"
GTV1408	14"	8"

GWV1406



Specification / Size	Length (inch)	Width (inch)
GWV1406	14"	6"

GFV



Specification / Size	Length (inch)	Width (inch)
GFV1606	16"	6"
GFV1608	16"	8"

ASE



Specification / Size	Duct Diameter (mm)	Duct Length (mm)
ASE4 / ASE1W / ASE1B	25	24
ASE1 / ASE2W / ASE2B	51	24
ASE2 / ASE3W / ASE3B	75	24
ASE3 / ASE4W / ASE4B	101	24

SAB



Specification / Size	Duct Diameter(mm)	Duct Length(mm)
SAB100	97	52
SAB125	120	52
SAB150	145	62
SAB160	155	62
SAB180	175	73
SAB200	195	73

Specification / Size	Duct Diameter(mm)	Duct Length(mm)
SAB 100LN	97	52
SAB 125LN	120	52
SAB 150LN	145	62

Vent Cap

ASB1604



Specification / Size	Length (mm)	Width(mm)
ASB1604	406	102
ASB1604CB	406	102
ASB1604CW	406	102

ASC



Specification / Size	Length (mm)	Width(mm)
ASC8	2438	57
ASC8CW	2438	57
ASC8CB	2438	57

ASB1606



Specification / Size	Length (mm)	Width(mm)
ASB1606	406	152
ASB1606CB	406	152
ASB1606CW	406	152

ASB1608



Specification / Size	Length (mm)	Width(mm)
ASB1608	406	203
ASB1608CB	406	203
ASB1608CW	406	203

GEV



Specification / Size	Length (inch)	Width (inch)
GEV1405	14"	5"
GEV2203	22"	3"

GSV



Specification / Size	Length (inch)	Width (inch)
GSV1405	14"	5"
GSV2203	22"	3"

4. Door Vent

GDV



Specification / Size	Duct Diameter (mm)	Duct Length (mm)
GDV1414	14"	14"
GDV1824	18"	24"

SSDA



ASDA



Specification / Size	Length (mm)	Width (mm)
SSDA93/ASDA93	225	75
SSDA96/ASDA96	225	150
SSDA99/ASDA99	225	225

5. Foundation Vent

GLV1406



GLVB1608



Specification / Size	Length (mm)	Width (mm)
GLV1406-1	350	150
GLV1406-1S	350	150
GLV1406-2	450	230
GLV1406-2S	450	230

Specification / Size	Length (inch)	Width (inch)
GLVB1608	16"	8"

7. Roof Flashing

ACR



Specification / Size	Up diameter /short-axes(inch)	Duct height (inch)
ACR534	5 $\frac{3}{4}$ "	9.8"
ACR778	7 $\frac{7}{8}$ "	10"
ACR967	9 $\frac{6}{7}$ "	10"
ACR467	4 $\frac{6}{5}$ "	9.8"
ACO869	8 $\frac{6}{5}$ "	10"

8. Diffuser

SUB

AUB



Specification / Size	Duct Diameter(mm)	Duct Length(mm)
SUB 100 / AUB 100	97	52
SUB 125 / AUB 125	120	52
SUB 150 / AUB 150	145	62
SUB 160	155	62
SUB 200	195	62

9. Accessories

ABL

GBL



Specification / Size	Duct Diameter(mm)	Duct Length(mm)
ABL100 / GBL100	95	50
ABL125 / GBL125	120	60
ABL150 / GBL150	145	65

ABI



Specification / Size	Duct Diameter(mm)	Duct Length(mm)
ABI100 / GBI100	100	88
ABI125 / GBI125	125	88
ABI150 / GBI150	150	88
ABI200 / GBI200	200	88

SME



Specification / Size	Duct Diameter(mm)	Duct Length(mm)
SME 100	87	7
SME 125	112	8
SME 150	135	10

SB1 150



Specification / Size	Duct Diameter(mm)	Duct Length(mm)
SB1 150	145	62

Factory 01:

Phu Cat Comune, Quoc Oai District, Ha Noi Capital, Viet Nam

Factory 02:

Km 16+500 Thang Long Avenue, Yen Son commune, Quoc Oai District,
Ha Noi Capital, Viet Nam


Factory 03:

Co Tho Village, Hoa Son commune, Luong Son district, Hoa Binh province

Factory 04:

Quat Dong Commune, Thuong Tin District, Hanoi City, Vietnam



 Văn phòng :Shop-house B5-20, KĐT Vinhomes Gardenia,
Đ. Hàm Nghi, P. Mỹ Đình, Q. Nam Từ Liêm, TP. Hà Nội.

 Nhà máy: Thôn 4 xã Phú Cát, Huyện Quốc Oai, Tp. Hà Nội

 SĐT: 0913554030 (C.E.O Nguyễn Xuân Tài)

 Email: info@prodetech.vn

tai.nguyensexuan@prodetech.vn

 Website: www.prodetech.vn

